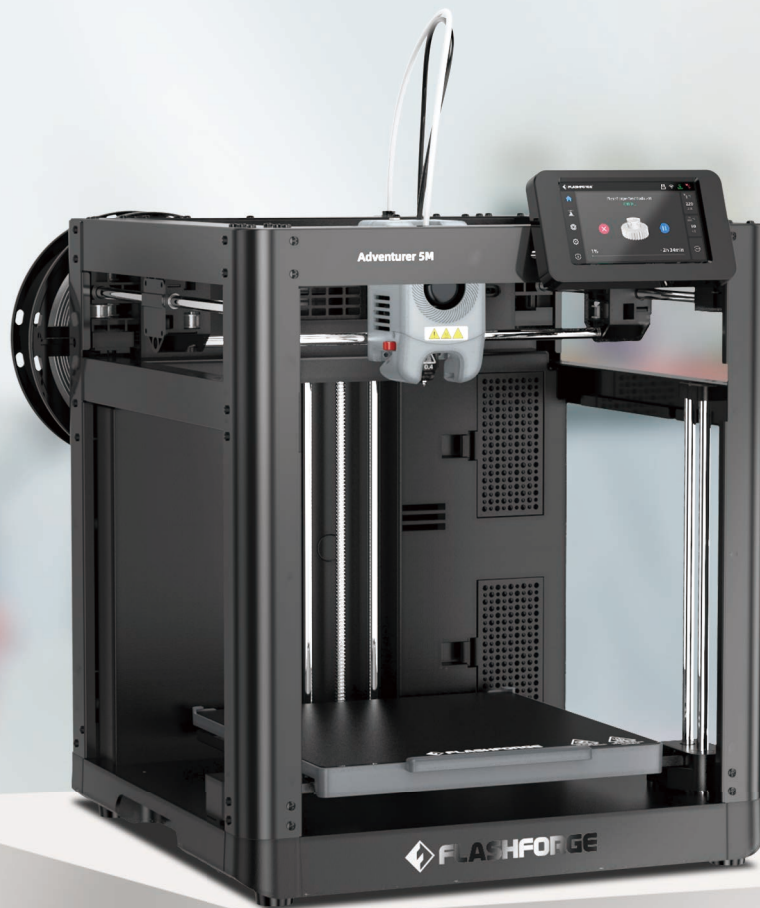


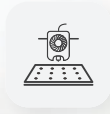


Adventurer 5M

Fast and User-friendly



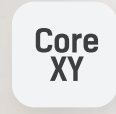
Adventurer 5M is well-suited for beginners, individual users, families, and educational institutions. Just one-click printing, without complicated operation procedures. Realize your ideas effortlessly.



Full-auto
one-click leveling



Maximum speed
600mm/s



Core XY
structure

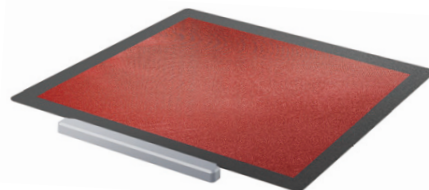
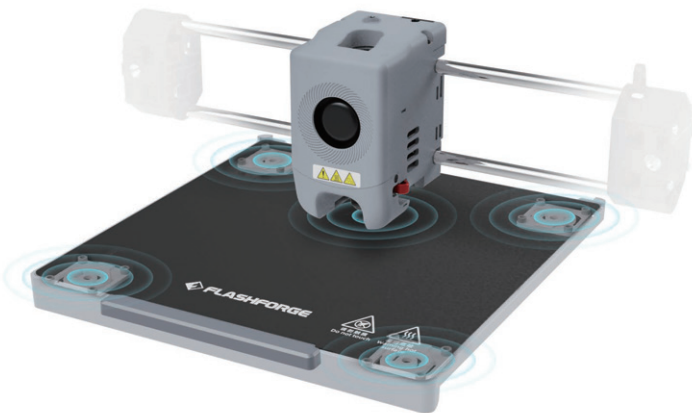


3-second
quick-swap nozzle



Full-auto one-click leveling, flawless first layer

Adventurer 5M features a full-auto one-click leveling system. It measures the distance and then calculates the correct offsets. No tools, no manual Z-axis calibration, while ensuring perfect first layer.





Efficiency and quality combined



Printing

Maximum speed **600mm/s**
Maximum acceleration **20000mm/s²**



Less waiting time

Nozzle with a flow of **32mm³/s**
50w heating power
200°C heating up in **35 seconds**

Astronaut

104*118*200mm (228g)

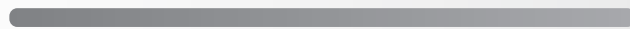
Adventurer 5M

4h10min

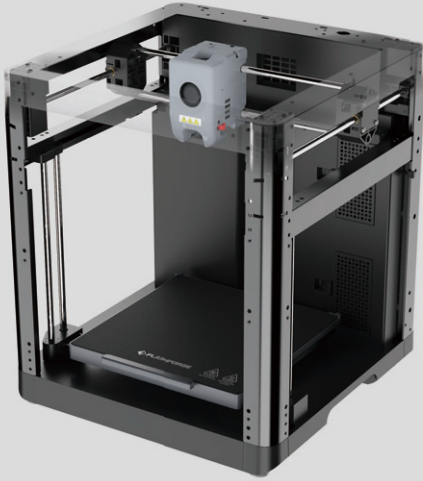


Others

19h20min



Robust designs for superior quality



Core XY structure, all-metal frame

Effective cooling by dual-channel structure



Vibration compensation, eliminating ghosting in prints



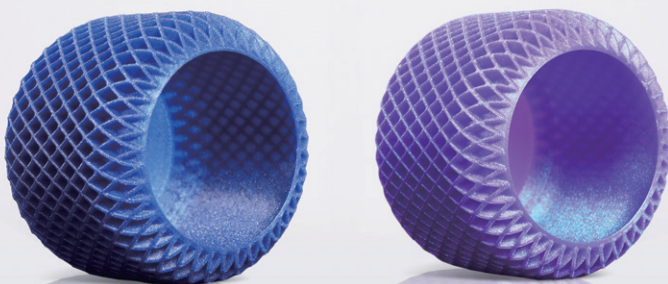
PLA



PETG



PLA



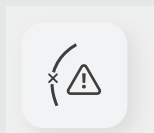
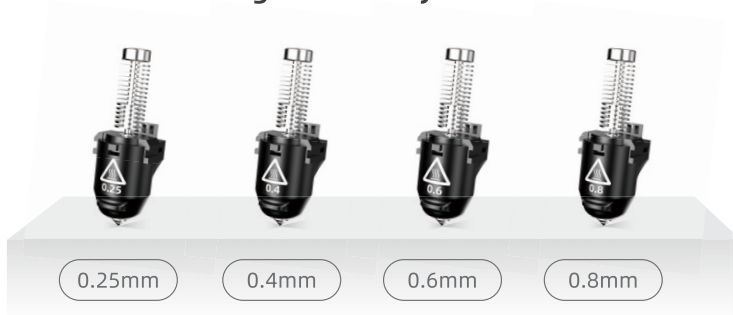
TPU



Easy-maintenance nozzle for both rookies and experts

Quick-detachable nozzle requires no tools for change in just 3 seconds

Various nozzle diameter (0.25/0.4/0.6/0.8mm) options suitable for both high-precision and high-efficiency mode



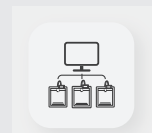
Filament Run-out Reminder



Power Loss Recovery



Flexible PEI Steel Plate



Integrated Printing Management

Adventurer 5M

Open 3D printer, suitable for use in open and well-ventilated environments



Parameters

Machine Name	Adventurer 5M
Extruder	Direct drive; Qty: 1
Filament	*PLA/*PETG/*TPU (0.4mm nozzle) PLA-CF/PETG-CF (0.6mm nozzle) <small>Note: Materials marked with * are recommended for printing.</small>
Nozzle Diameter	0.4mm/0.6mm/0.8mm/0.25mm
Extruder Temperature	280°C
Platform Temperature	110°C
Build Volume	220*220*220mm
Speed	Max traveling speed: 600mm/s
Acceleration	Max acceleration: 20000mm/s ²
Build Plate	Flexible removable PEI steel plate
Display Screen	4.3-inch
Device Size	363*376*413mm (excluding the display screen and spool holder) 363*402*448mm (including the display screen, excluding the spool holder)
Power Supply	AC 100~120 / 200~240V, 50/60Hz, 350W
Compatible Slicing Software	FlashPrint/Prusa Slicer/Cura/Orca Slicer
Air Filtration	/
Shell	Open
Noise	/
Connectivity	Wi-Fi; Ethernet; USB
Other Functions	Filament run-out reminder; Power loss recovery



Zhejiang Flashforge 3D Technology Co., Ltd.

Address: No.518 XianYuan Road, Jinhua City, Zhejiang Province, China

Service Hotline: +86 579 82273989

Email: support@flashforge.com



Follow us